


MetalPrint

Cans Manufacture
& Print Tinplate



INTRODUCTION





Metalprint company is one of the biggest companies in Egypt for printing tinplate and producing aerosol and food cans tinplate. It was established since 1985 in 10th of Ramadan city which is about 50 km from east of Cairo. Our products are:

Aerosol cans diameter 52, 57 & 65mm of different heights. These aerosol cans can be printed or lacquered inside to fulfill the products requirements.

Food cans diameter 52, 65, 73, 99 & 153 mm. of different heights. These food cans may be printed, lacquered or beaded according to the customer's desire and products requirements.

AEROSOL CANS DIMENSIONS

Aerosol cans diameter 52,57 & 65 mm of different heights. These aerosol cans are printed and maybe lacquered inside to fulfill the products requirements.



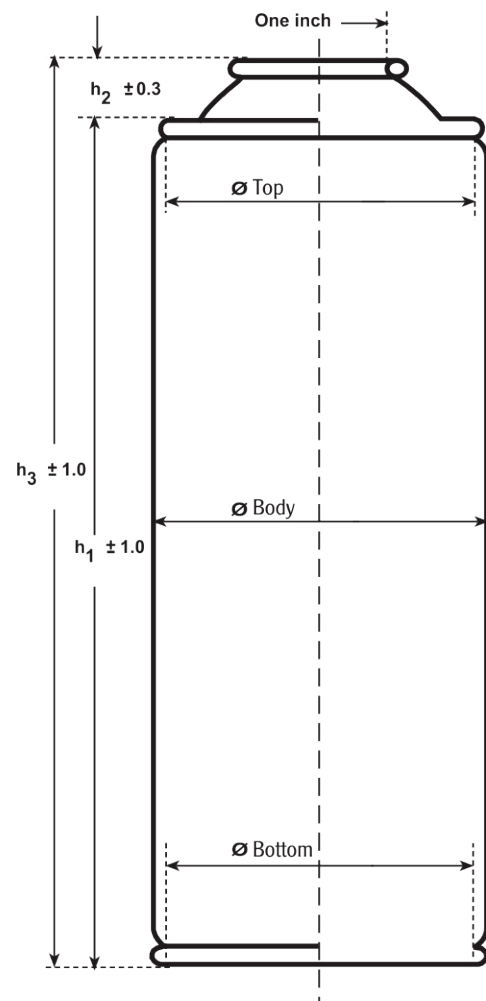
Nominal Diameter (mm)	Filling Capacity (ml)	Can Volume (Brimful) (ml)	Height (mm)		
			h_1	h_2	h_3
52	150	210	105	8.5	113.5
	200	270	132	8.5	140.5
	250	335	161	8.5	169.5
	300	405	195	8.5	203.5
	400	520	240	8.5	248.5

57	250	335	136	10.0	146.0
	300	405	164	10.0	174.0
	400	520	207	10.0	217.0
	450	600	240	10.0	250.0
	500	650	260	10.0	270.0

65	250	335	105	13.5	118.5
	300	405	122	13.5	135.5
	400	520	157	13.5	170.5
	500	650	195	13.5	208.5
	600	800	240	13.5	253.5
	650	850	260	13.5	273.5
	750	1000	300	13.5	313.5

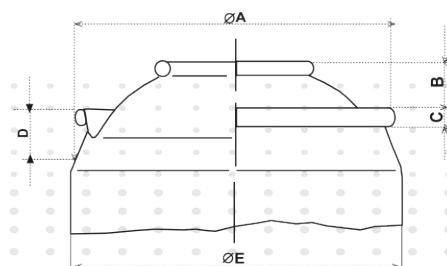
Test Pressure (bar overpressure) 12 and 15

Aerosol Necked-in Cans



Sefel - FEA Standards For Necked-in cans

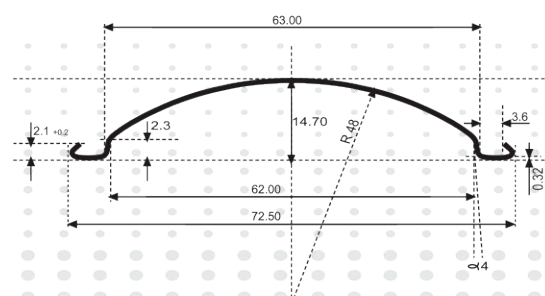
Nominal Diameter	A	B	C	D	E
45	43.6	5.6	2.9	5.3	45.2
52	50.7	8.0	3.2	5.6	52.7
57	55.5	9.5	3.3	6.0	57.6
65	63.2	13.5	3.3	6.3	65.9
Tolerance	± 0.3	± 0.3	± 0.15	$+0.5/-0.0$	± 0.3



AEROSOL CONES & DOMES DIMENSIONS

Cones & domes are stamped out of tinplate sheet, their rims (curled) are lined with a compound. The curl enables cone and dome to be attached to the lip ends of the cylinder. The compound lining ensure a right seal. These cones and domes could be plain or lacquered according to customer's request.





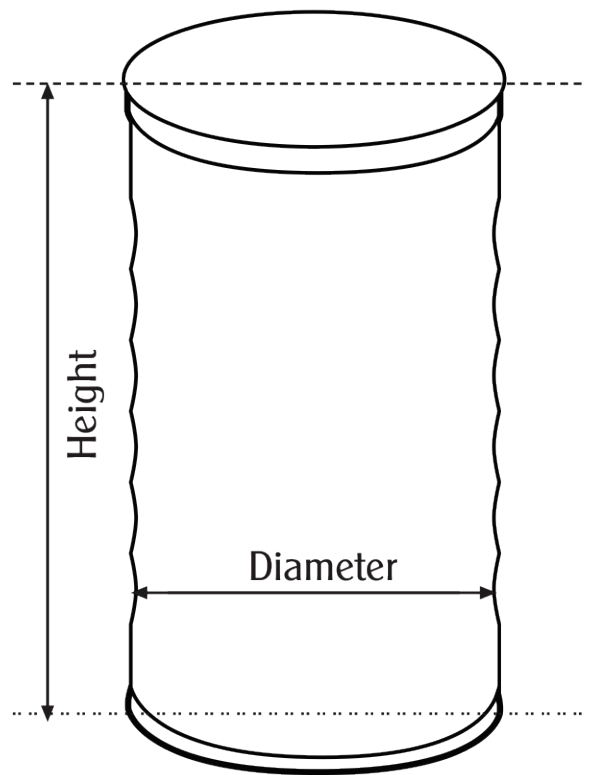
FOOD CANS DIMENSIONS

Food cans diameter 52, 65, 73, 99 & 153 mm of different heights.
These food cans maybe printed, lacquered or beaded according to the customer's
need and products requirements.





Diameter (mm)	Height (ml)	Can Volume (ml)
52	38	60
	70	130
65	29	70
	34	88
	118	265
73	30	84
	38	118
	53	181
	58	203
	61	217
	90	336
	101	380
	103	390
	110	420
99	206	819
	48	303
	63	416
	119	837
	141	1011
	173	1230
	180	1300
	200	1454
153	240	1864
	63	1060
	105	1740
	113	1848
	117	1945
	125	2086
	155	2545
	176	3008
	242	4281



FOOD CANS END DIMENSIONS

It is available in different diameters and heights. Available diameters are 52, 65, 73, 99 & 153 mm.





202 (52 mm)



211 (65mm)



300 (73mm)



401 (99mm)



603 (153mm)

Printed Tinplate

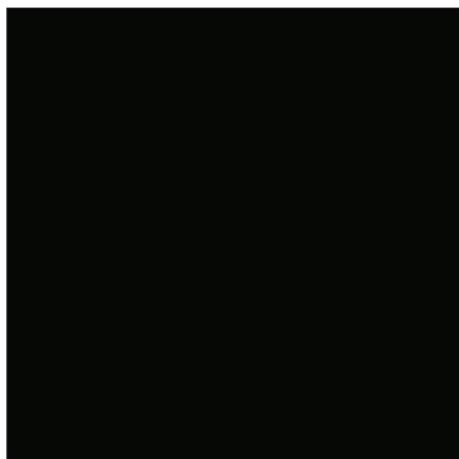
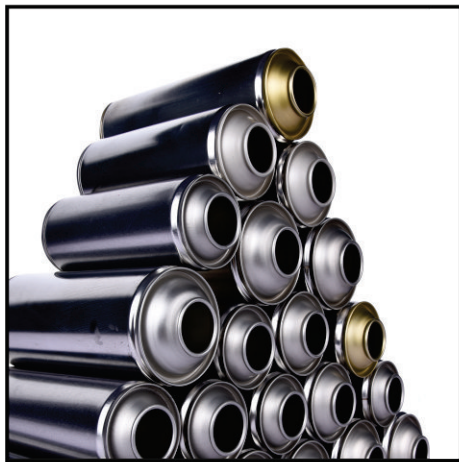
We print tinplate according to the customer's designs.

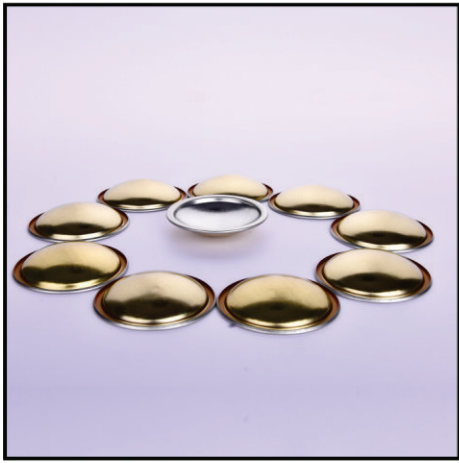
Design considerations:

The design may be subjected to a little bit amendments to fulfill the printing requirements.









TINPLATE

•On receipt of your artwork we will determine the number of passes and colours required. When Proofs or bromides of the final art form are returned to you for approval, please note the accompanying reference number and design name which are to be quoted when confirming your order and in all subsequent correspondence. Over the page are some guide lines to help you achieve greater uniformity within and between production runs; and to plan and specify the print area for your can.

Our design team are leaders in their field. Operating from graphic studios equipped with the latest in design facilities, they are ready to advise our customers and their designers on all aspects of artwork preparation, to ensure first class results.

CAN BODIES

It have developed the process of printing on tinplate to a fine art. This provides endless opportunities for marketers to create the right image for their product. Because tinplate for the body is printed flat as opposed to aluminium and plastic which are printed in the round, greater accuracy, clarity and therefore 'quality' can be achieved.

CAN ENDS

It may be coloured to match or complement the body design. The colour range includes black, white, and gold. Colouring and lettering on can ends are subject to colour matching and minimum run quantities. Where 'plain' tops and bottoms are specified, the finish is in clear lacquer.

BARCODE

The bar code is now an important feature in most can designs. The print design area should contain a window for the insertion of bar code symbols which may consist of 8 or 13 digits. All components are finished with a varnish coat to protect the decoration from damage during manufacture, transportation, storage and use.

MetalPrint Manufacture & Print Tinplate



Office: 99 El-Sebak St., Heliopolis, Cairo, Egypt

Factory: 10th of Ramadan City, Industrial Area B2

POB: (2) 10th of Ramadan, Tel: 002 554 501261/2 Fax: 002 554501260

www.metalprint.com.eg e-mail:info@metalprint.com.eg